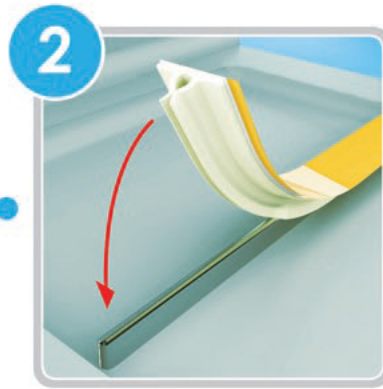
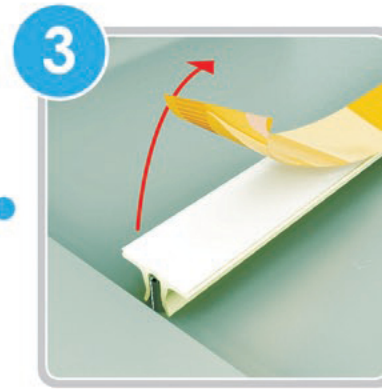




1
Cut Matrix to length of
Creasing Rule



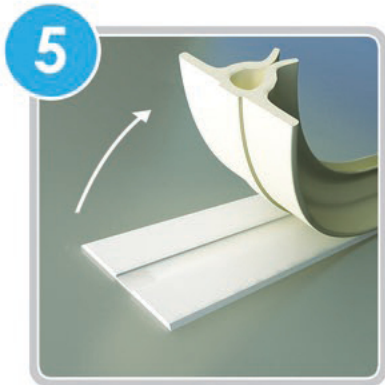
2
Position Matrix over rule
and push into place



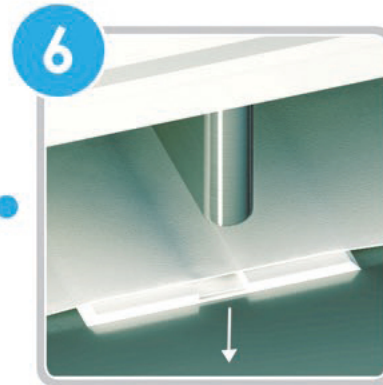
3
Remove backing strip to
reveal adhesive membrane



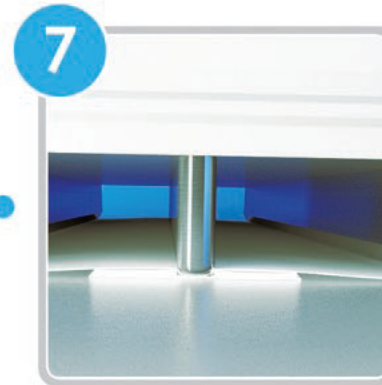
4
Lock die into press and index
machine to place Matrix
on opposing platen



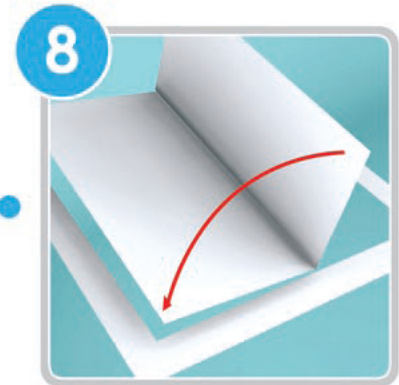
5
Remove locator strip by
pulling firmly upwards



6
Position board and
activate the machine



7
Board is creased and cut



8
Remove board and
test the crease